



casework USA[®]
BY WB MANUFACTURING

**Durable cabinets built for
schools, offices, and more**



WB Manufacturing LLC

800.242.2303 | info@wibenchmfg.com | www.wibenchmfg.com

Wall Cabinet



W2682-303014

Products Shown In Room

<i>Products Shown In Room</i>	<i>Model #</i>
CaseworkUSA® Double Glass Door Wall Cabinet	W2682-303014
CaseworkUSA® Top-Split Drawer over Double Door Base Cabinet	B2400-303323
CaseworkUSA® Sink Base Cabinet	B4402-303323
CaseworkUSA® Corner Wall Cabinet	W2951-243024
CaseworkUSA® Double Door Tall Cabinet	T3232-368423
CaseworkUSA® Double Glass Door Tall Cabinet	T3622-368423
EPIC Tables with Phenolic Top	EPC8082-FX
Jackson Teacher's Desk	TD2010-AC
Custom Science Workstation	Call Estimating



Base Cabinet

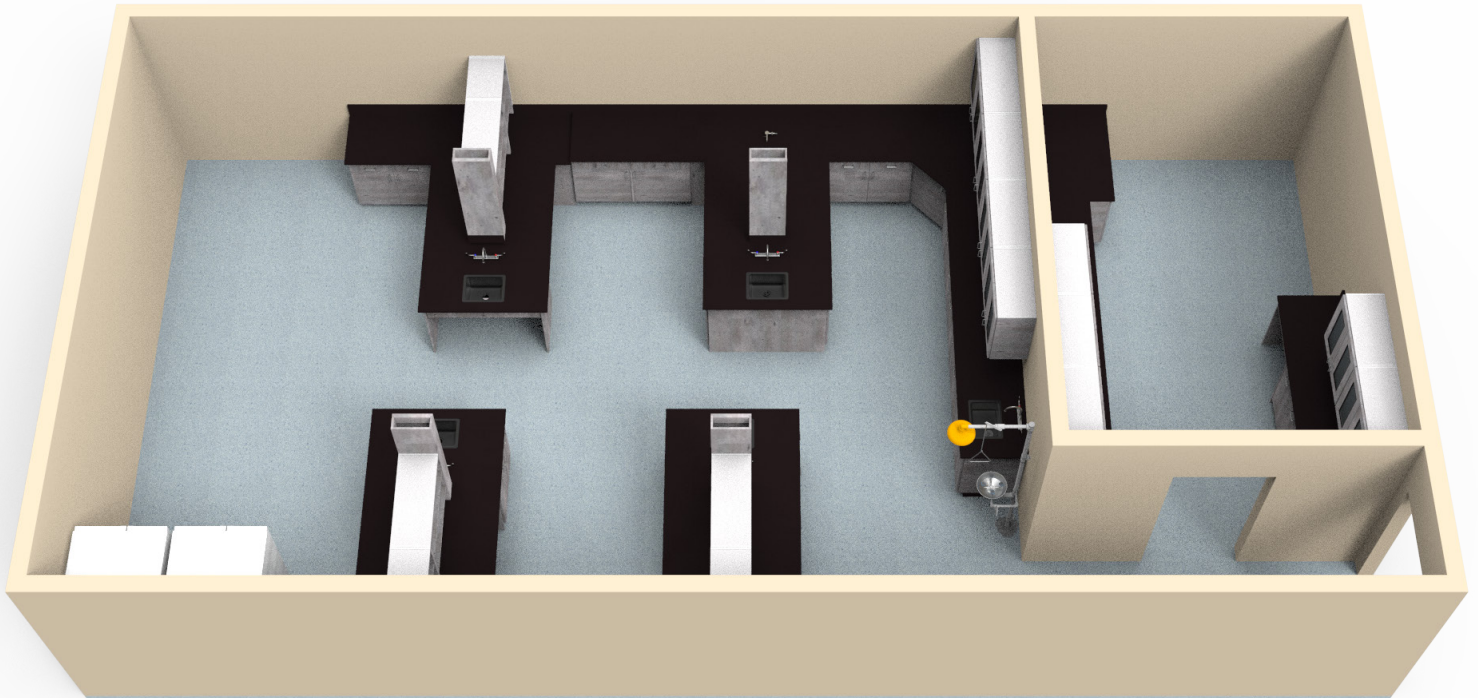


B2325-303523
Unit shown in Premium finish
and with optional kick trim

Products Shown In Room

Model #

CaseworkUSA® Single Drawer over Double Door Base Cabinet	B2325-303523
CaseworkUSA® Sink Base Cabinet	B4402-303523
CaseworkUSA® Double Glass Door Wall Cabinet	W2682-303014
Custom Shelving	Call Estimating
Epoxy Top	Call Estimating



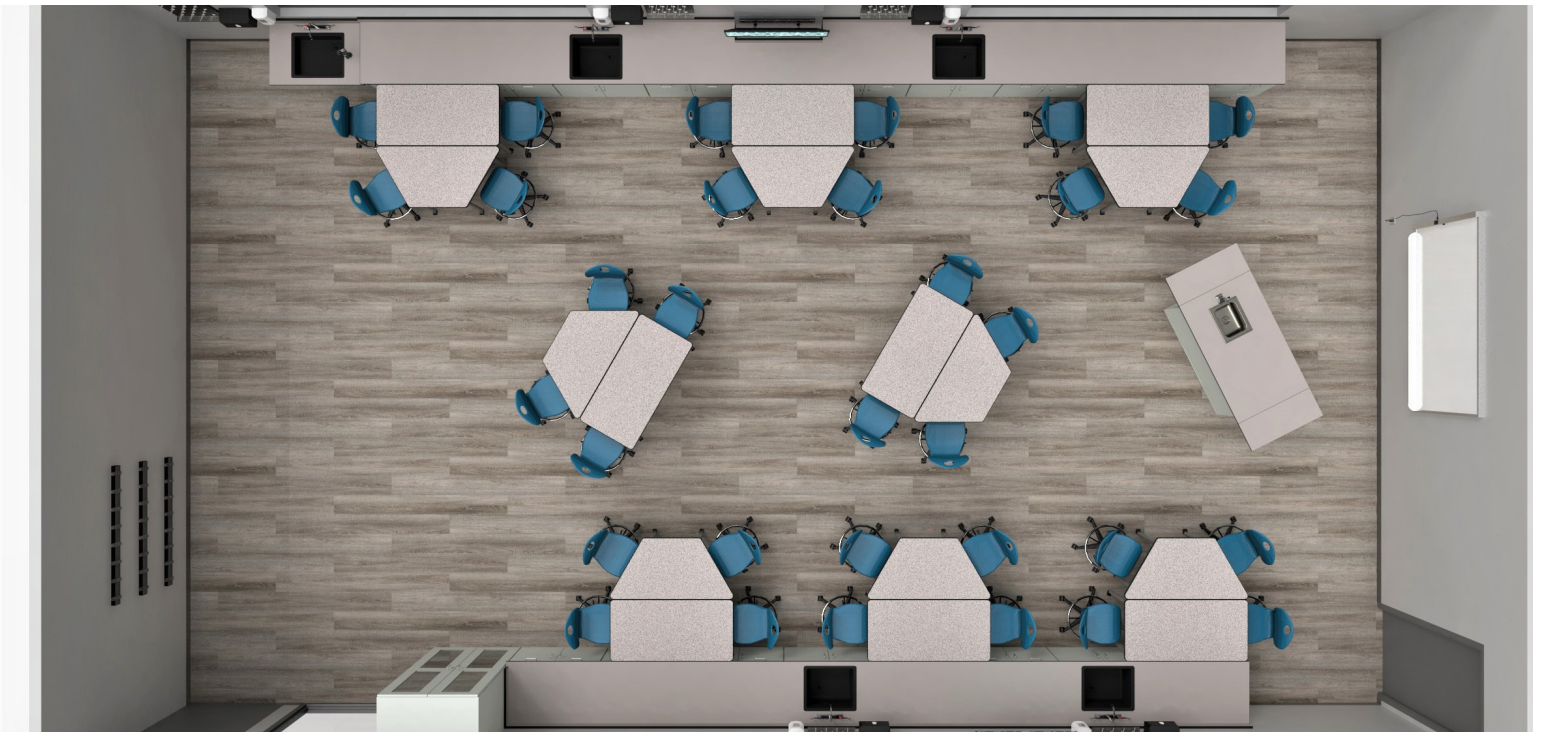
Tall Cabinet



T3622-368423

Products Shown In Room

<i>Products Shown In Room</i>	<i>Model #</i>
CaseworkUSA® Double Glass Door Tall Cabinet	T3622-368423
CaseworkUSA® Top-Split Drawer over Double Door Base Cabinet	B2400-303323
CaseworkUSA® Sink Base Cabinet	B4102-303323
Demo Station / Science Workstation	SC8340-SKHW-AC
ELO® Trapezoid Table	ELS7212-ADJ-CA
ELO® Rectangle Table	ELS7069-ADJ-CA



Sink Base Cabinet



ADAS-362423

Products Shown In Room

Products Shown In Room	Model #
ADA Compliant Sink Base Cabinet	ADAS-362423
CaseworkUSA® Double Door Tall Cabinet	T3232-368423
CaseworkUSA® Double Door Base Cabinet	B3112-303323
CaseworkUSA® Double Door Wall Cabinet	W2182-303014
Custom Cubbies	Call Estimating





Open Base Cabinets



Open Cabinets w/ Drawers



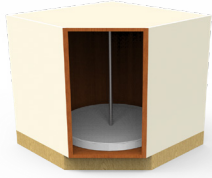
Door & Drawer Base Cabinets



Door Base Cabinets



Sliding Door Base Cabinets



Open Corner Base Cabinets



Corner Base Cabinets/ Door



Blind Corner Base Cabinets



Sink Base Cabinets



Drawer Base Cabinets



Open Wall Cabinets



Wall Cabinets w/ Doors



Sliding Door Wall Cabinets



Sliding Glass Door Wall Cabinets



Glass Door Wall Cabinets



Open Corner Wall Cabinets



Corner Door Wall Cabinets



Corner Glass Door Wall Cabinets



Blind Corner Wall Cabinets



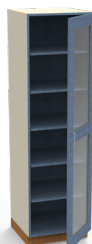
Accessory Wall Cabinets



Open Tall Cabinets



Door Tall Cabinets



Glass Door Tall Cabinets



Double Door Tall Cabinets



Double Glass Door Tall Cabinets



Split Glass Door Tall Cabinets



Split-Door Tall Cabinets



Double Split-Door Tall Cabinets



Double Glass Split-Door Tall Cabinets



Specialty Tall Cabinets



Open Tall Wardrobe Cabinets

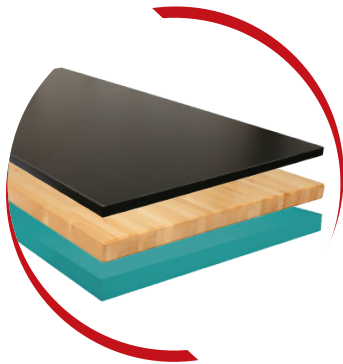


Door Tall Wardrobe Cabinets



CoVantage Credit Union





**Add a Phenolic Resin,
Butcher Block,
or High Pressure Laminate
Top to Complete Your
CaseworkUSA® Cabinet.**



Phenolic Resin

With high resistance to chemicals, humidity and abrasion, our standard 1" thick black phenolic resin tops provide the perfect surface for lab tops, shelves and panels.

Butcher Block

Butcher block benchtops are rugged, yet yielding, providing a safe surface for crafted from face-glued hardwood strips, sanded to a smooth finish for outstanding strength and quality appearance.

High Pressure Laminate

Perfect for assembly and packing stations, our high-pressure laminate (HPL) tops are easy to clean and are resistant to mars, burns, stains, oils and most solvents. HP laminate tops are constructed with a phenolic or resin backer sheet to balance the construction and are also available with a chemical resistant surface.

CaseworkUSA® Overview

- Classic Finish (/C):** Decorative high pressure laminate (HPL) on exposed surfaces; door fronts, drawer fronts, exposed ends (optional), wall cabinet bottoms, open interiors, interiors with sliding doors and behind glass doors. White thermal fused laminate (TFL) on semi-exposed and hidden surfaces. Drawer boxes are always white, thermal fused laminate (TFL).
- Premium Finish (/P):** Double sided high pressure laminate (HPL) applied to all surfaces of cabinets. Drawer boxes are always white, thermal fused laminate (TFL).
- Case:** Fully doweled 0.75", full subtop and 0.5" inset back fully housed at top, bottom and back, matching 3mm PVC edge banding
- Top:** 1" (HPL) w/1" backsplash up to 144" (sold separately, field installed), matching 3mm PVC edge banding
- Drawers:** 0.75" matching HPL front w/3mm PVC edge banding, 4" satin nickel pulls, standard full extension side mount steel ball bearing glide
- Doors:** 0.75" HPL door fronts, 3mm PVC edge banding, 4" satin nickel pulls, 6-point adjustable concealed hinge (European hinge), Disc Tumbler lock standard **only** on Wardrobe cabinets, optional on all other cabinets
- Shelves:** 0.75" white TFL on interior shelves, HPL on exposed shelves and HPL on interior shelves on open units (fixed are fully doweled, adjustable have 4 double-pin shelf clips)
- Base:** 0.75" exterior grade unfinished plywood applied base (no finished materials provided as standard), matching 3mm PVC edge banding on front edge.
- Optional:** Deadbolt lock (standard on all Wardrobe cabinets with doors), non-standard edge band, finished ends, cabinets available with all fixed shelves (call Estimating),

Classic: *Select 1 HPL color on exposed surfaces*

Premium: *Select 1 HPL color on all surfaces*

Drawer boxes are white Thermal Fused Laminate (TFL).

Standard HPL Colors See 'WB Finishes' section for available edge banding colors.

-03 White	-CV Folkstone	-D11 Love Letters	-A73 Classic Linen	-D17 Vision Vava	-D19 Cookies & Cream	-05 Dove Grey	-25 Grey Nebula	-C51 Looks Likatre	-D12 Sleeping In	-L07 Wrought Iron	-B58 Burnt Strand	-C99 Little Black Dress	-A02 Asian Night
-04 Almond	-D18 Picnic in the Park	-C97 Beachcomber	-C15 Buka Bark	-94 Fusion Maple	-KB Hardrock Maple	-FV Honey Maple	-32 Bannister Oak	-SR Oiled Cherry	-Z09 American Cherry	-Z01 Earthen Warp	-A19 Chocolate Warp	-D22 Walnut Grove	-09 Black
-D08 Eggplant	-N5 Cassis	-60 Hollyberry	-C09 Tangerine	-C98 Fresh Papaya	-D69 Forsythia	-A40 Island	-T01 Sprout	-A41 Ocean	-R01 Blue Agave	-D13 Summer Vacation	-MD Blueberry Hill	-HL Woolamai Brush	