

# Ingenuity LOBO Table

## specifications

### HPL Tops:

The core material is 1.125" thick particle board with a phenolic backer sheet and high pressure laminate (HPL) on top making the top 1.25" thick. Complimentary thin PVC edge banding is applied to all sides, square corners.

### HPL Rails:

The core material is .935" thick particle board with double sided high pressure laminate (HPL) making the top 1.06" thick. 5" height. Railings match the color of the laminate top. WB standard 3mm PVC edge banding\* is applied to all sides, square corners.

Railings are attached to the laminate top using joint connector bolts going into threaded inserts making it an extremely strong metal-to-metal connection.

\*3mm PVC edge banding is matching, unless otherwise specified. Complementary color available upon request.

### Corner Gusset Kit:

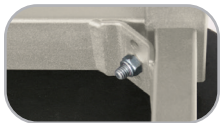
Recommended for all LOBO tables with caster option, table size that exceeds 30" x 72" or intended table use heights greater than 31" for increased stability. Comes standard on model LOB3111-ADJ-G-RR60.

**Shipping Class:** Tops: 70

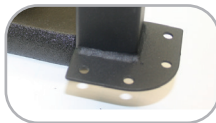
**NMFC#:** Tops: 83620-2, Frames: 82790

**Assembly:** Unassembled

### Standard Features:



0.3125" bolt secures leg to 10-gauge reception plate



Welded plate and #10 screws secure leg to top



Adjustable legs adjust in 1" increments



1.375" nylon glides

### LOBO Frame:

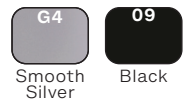
The solid steel apron is 1" x 2", 16-gauge steel tube that is MIG welded with 10-gauge corner brackets that have (1) 3/8" hole drilled for leg mounting. The frame has welded tabs at preset locations used for fastening the apron frame to the back of the table top.

### LOBO Leg:

Adjustable - 1.5" square tube steel (-ADJ) legs. The adjustable leg option includes a 1.5", 16-gauge outside tube which has two (2) holes for positive contact and safety with adjustability. The inner portion of the leg is a 1.25", 16-gauge square tube which is flow-drilled with tapped holes. The inner leg section is fabricated to fit into the upper leg assembly. Leg adjustments are made using two (2) M6 screws into the tapped holes of the lower leg. The upper leg has one (1) 5/16" leg bolt that is welded to the leg for attachment to the apron frame. Place a 5/16" lock washer and a 5/16" hex nut onto the leg bolt to attach leg to the apron frame. Use #10 x 3/4" square pan screws to secure the leg plate to the top. Leg is finished off with a 1 3/8" adjustment nylon glide with 3/8"-16 thread x 1".

### Finish:

The apron frame and the leg assembly are available in a texture black finish (09) or powder-coated smooth silver (G4).



### Ingenuity LOBO Table

Model #	Wgt	Description	Top D"x L"	Worksurface H"	Overall H"
LOB3071-ADJ-RR6	112	(4) 1.5" Square Adjustable Legs	26.12 x 62.12	23.5 - 37.5	27.13 - 41.13
LOB3082-ADJ-RR6	129	(4) 1.5" Square Adjustable Legs	32.12 x 62.12	23.5 - 37.5	27.13 - 41.13
LOB3092-ADJ-RR6	145	(4) 1.5" Square Adjustable Legs	38.12 x 62.12	23.5 - 37.5	27.13 - 41.13
LOB3111-ADJ-G-RR6	251	(4) 1.5" Square Adj. Legs, Gussets	50.12 x 98.12	23.5 - 37.5	27.13 - 41.13



LOB3092-ADJ-RR6

### Optional Features:



1.25" Soft Touch glide (-FG)



1.25" Steel glide (-SG)



2.5" Grand Hank glide (-HG)



Dual wheel soft tread locking casters (-CA)\*



3" heavy-duty locking casters (-HDCA)\*



Tote tray kit (-TB\_)  
(Clear is standard. See catalog for color selection.)










One piece bolt-on corner gusset (-G)\*\*



3" heavy-duty locking colored casters (-HDCC)\*

### 3" Heavy Duty Colored Caster Chart

Model #	SKU	Colored Caster	
-HDCCP	04067882-P	Purple	
-HDCCR	04067882-R	Red	
-HDCCL	04067882-L	Lime Green	
-HDCCB	04067882-B	Blue	
-HDCCO	04067882-O	Orange	
-HDCCG4	04067882-G4	Grey	
-HDCC09	04067882-09	Black	

\*Casters are NOT to be used as leveling devices and require field assembly. (-CA) raise overall heights by 2.11 and (-HDCA & -HDCC\_) raise heights by 3.5".

\*\*Corner gusset kit: Recommended for all LOBO tables with casters, if table size exceeds 30" x 72" or the height for intended use is greater than 31". Kits are not available on any shaped tables excluding rounds.