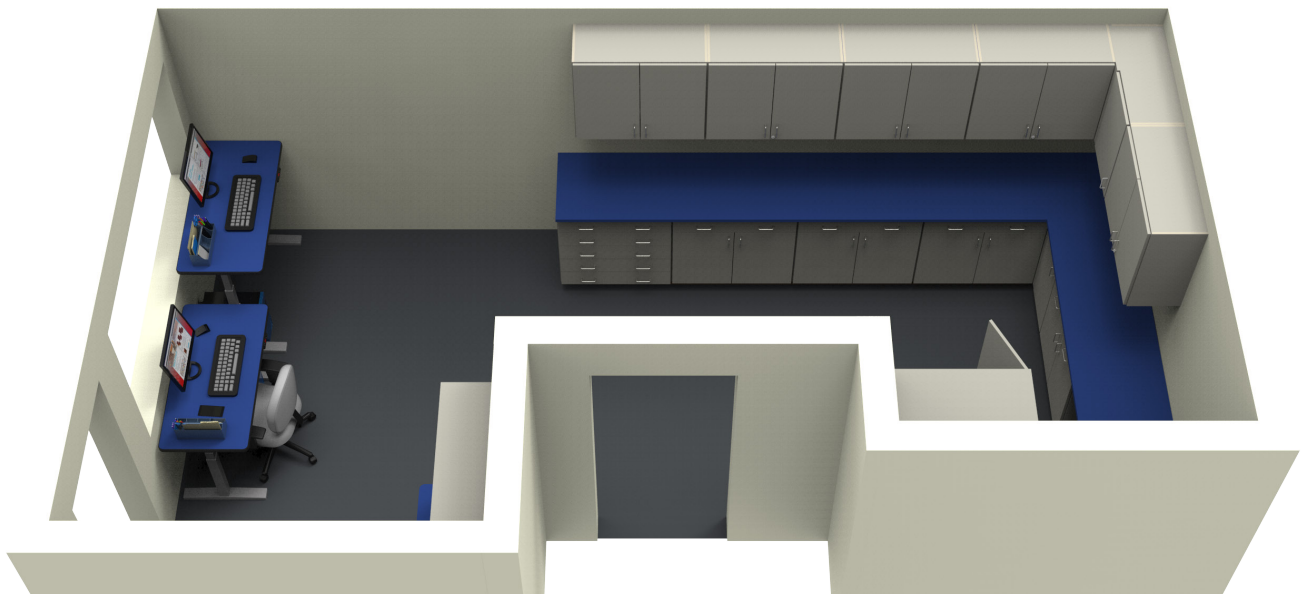


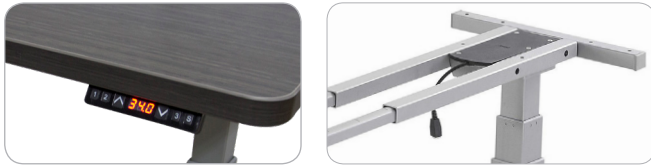
Products Shown In Room

Model #

<i>Products Shown In Room</i>	<i>Model #</i>
Elevate Admin Table	GIB7069-1000-1010
Mail Slots	MSL2552-484814
ELO® Rectangle Table	ELS6069-ADJ
REplay® Wardrobe Tall Cabinet	RT4222-367223
CaseworkUSA® Door and Drawer Base Cabinet	B2300-363523
CaseworkUSA® Blind Corner Base Cabinet	B2510-423523
CaseworkUSA® Drawer Base Cabinet	B6055-333523
CaseworkUSA® Double Door Wall Cabinet	W2182-363014
CaseworkUSA® Blind Corner Wall Cabinet	W2510-363014
Countertop	Call Estimating



Elevate Electric Adjustable Mechanism



Digital Display helps you find the perfect height

Elevate Electric Height*
24.5" - 50.5"
*height shown is overall height with glides.

Elevate Hand Crank Mechanism

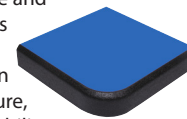


Elevate Hand Crank Height*
29.5" - 42.75"
*height shown is overall height with glides.

Multiple Mail Slot Cabinet Sizes Available



Our most durable edge is strong enough to stand up to everyday abuse and is virtually indestructible. Perfect for table tops, benches and stools, this unique edge coating allows for easy clean-up from lunchroom spills or a deep, steam cleaning when needed. By removing the biggest concern of separation from the top along with resistance to bacteria and moisture, Lotz Armor Edge™ comes with a proven track record for long-term durability.



Standard HPL Colors* See 'WB Finishes' section for available edge banding colors. Standard TFL Colors are also available for Cabinets and Mail Slots

Vertical Grain	-Z09 American Cherry	-A02 Asian Night	-32 Bannister Oak	-R01 Blue Agave	-C15 Buka Bark	-B58 Burnt Strand	Solid	-04 Almond	-09 Black	-N5 Cassis	-05 Dove Grey	-CV Folkstone	-C97 Beachcomber	-A19 Chocolate Warp	-A73 Classic Linen		
	-D08 Eggplant	-94 Fusion Maple	-FV Honey Maple	-KB Hardrock Maple	-C99 Little Black Dress	-D11 Love Letters		-D69 Forsythia	-C98 Fresh Papaya	-60 Hollyberry	-A40 Island	-MD Blueberry Hill	-D19 Cookies & Cream	-Z01 Earthen Warp	-25 Grey Nebula		
	-SR Oiled Cherry	-D18 Picnic in the Park	-D12 Sleeping In	-T01 Sprout	-C09 Tangerine	-D22 Walnut Grove		-A41 Ocean	-D13 Summer Vacation	-03 White	-L07 Wrought Iron	-HL Woolamai Brush	-D17 Vision Vava				
	Additional Formica, Wilsonart and Panolam laminates available. Call Estimating for a custom quote.						-52MB White Markerboard	Other markerboard colors available (see 'WB Finishes' section)									
							-S04 Black (standard)	Lotz Armor Edge™ Options			-S05 Dove Grey	-S03 Slate Grey	-S07 Indigo	-S07 Plum			

*Standard options available without additional fees. Quantities, sizes, and lead times vary. Contact customer service for lead time.

Specifications are subject to change. Product images are for illustrative purposes only and may differ from the actual product.